



Upande

**we enable smart, transformative, reliable, data driven
decisions for our diverse customers across Africa**



Water Sanitation Management Information System

key activities

->link field to office

The screenshot displays the WaSHMIS Collect web application interface. It features a map with numerous data points (green and blue dots) representing water connections. A sidebar on the left contains a list of filters: "Does the customer have a connection/account with Rujeesco?", "Type or click to filter:", "No (2407)", "Yes (2177)", "Mapbox Basic", "Mapbox Outdoors", "Mapbox Streets", "Mapbox Bright", "Mapbox Light", "Mapbox Dark", "Mapbox Satellite", and "Hi-Res Satellite (DigitalGlobe)". A central panel shows a detailed view of a specific location, including a satellite image and a list of data points. A sidebar on the right contains a list of data points, including "ID: 28225012 - Submitted at 12:14 PM on Apr 10, 2018", "Data collector's name: Brenda Acheng", "Date: Apr 10, 2018", and "Service area details: Select region: Thika, Zone: 2".

Does the customer have a connection/account with Rujeesco?

Type or click to filter:

- No (2407)
- Yes (2177)

Mapbox Basic

Mapbox Outdoors

Mapbox Streets

Mapbox Bright

Mapbox Light

Mapbox Dark

Mapbox Satellite

Hi-Res Satellite (DigitalGlobe)

ID: 28225012 - Submitted at 12:14 PM on Apr 10, 2018

Edit | Delete | Show Metadata

Data collector's name: Brenda Acheng

Date: Apr 10, 2018

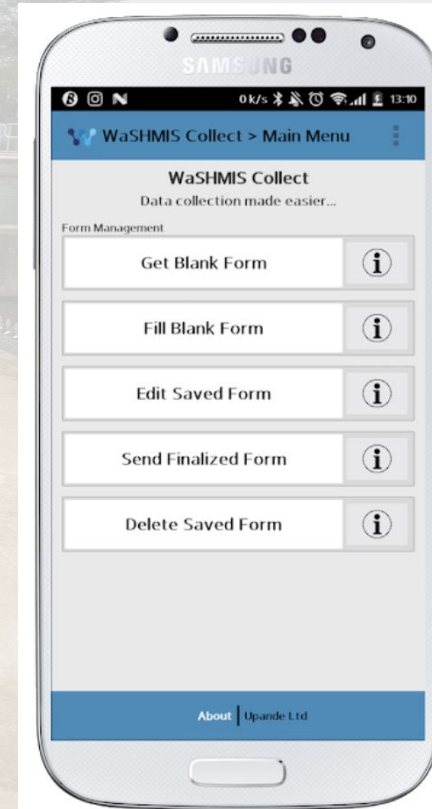
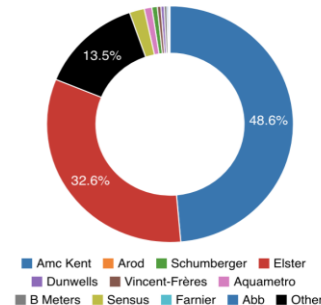
Service area details

Select region: Thika

Zone: 2

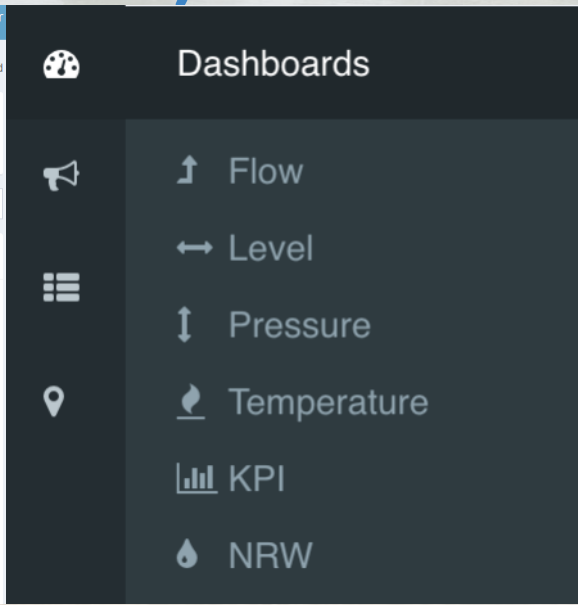
1. Water Connection Status
2. Sewer Connections
3. Sanitation Types
4. Billing Status
5. Metering Status
6. State of the Meter
7. Metering Problems
8. Meter Brands

Meter Brands



IoT based monitoring 24/7

-> smart meters, flow, pressure, level, water quality (Vipimo)



activity stats

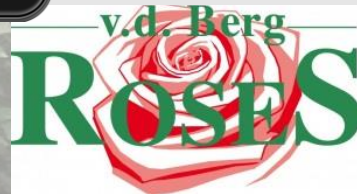
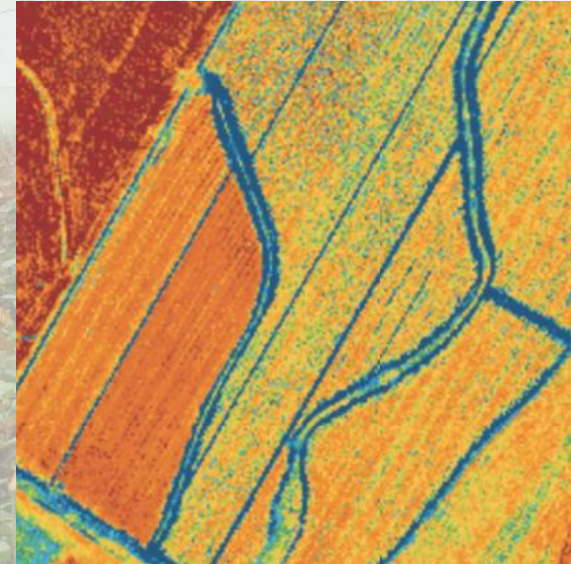
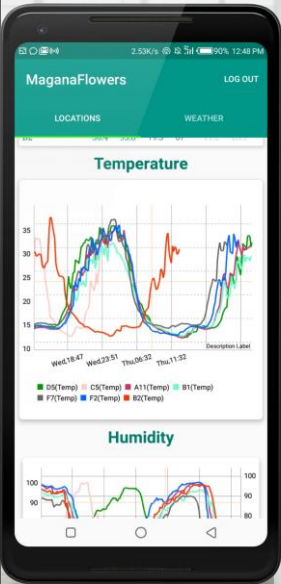
- > 10 WSPs served in Kenya
- > 1719 LIAs (in 40 WSPs) mapped
- > 40 rural schemes through WSTF
- > 100k households mapped
- > 450k beneficiaries reached (CIS)
- > 3,000,000 sensor readings (1yr)

value proposition

- > subscription a service
- > modular (GIS, IoT, ERP)
- > loss reduction tools
- > 24/7 monitoring through IoT
- > built in Kenya



smart, affordable, live data from field sensors, data, erp *to app*



testimonial

Monthly revenues went from KES
300,000 to KES 1,300,000 after
implementation of CIS driven
corrective actions

Eng Daniel Ngang'a, MD MUWASCO



testimonial



Having Washmis sensors at my kiosks means we never run out of water, we never miss potential sales...

Anthony, MD PureFresh



customers (ke)



partners

VIA Water


Aqua for All


Upande Washmis

ONIN




ITC
UNIVERSITY OF TWENTE.




IHE
DELFT


GSMA™

Deltares
Enabling Delta Life 

what is our ask?

- >partnerships in scaling up
- >pilot new tools
- >explore new business models
- >grants, convertible loan, equity

let us talk...



mark@upande.com

washmis@upande.com

washmis.com @washmis

@upande @vipimonet



Upande